

The motor camp

By DAVE ARMSTRONG

BASED ON A STORY
By DANNY MULHERON



AUCKLAND
THEATRE
COMPANY

PRINCIPAL FUNDERS



CORE FUNDERS

PREMIER PARTNER



MAJOR SUPPORTERS



MEDIA PARTNERS



SUPPORTING PARTNERS



2012 VENUE PARTNERS

MAIDMENT THEATRE / THE EDGE / Q / SKYCITY THEATRE /
BRUCE MASON CENTRE / HERALD THEATRE

Happy New Year

Welcome to THE MOTOR CAMP, first up in our 2012 season of plays.

With hits like LE SUD, NUI SILA, and THE TUTOR, Dave Armstrong has built a big following with Auckland Theatre Company audiences for his very funny satires on kiwi lifestyles. THE MOTOR CAMP looks set to join that club; it's the perfect opener for our ENCOUNTER season – as two very different Auckland families turn into the camping holiday neighbours from hell. As with all good satires there is serious intent and, beneath the sizzling shenanigans of THE MOTOR CAMP, Dave Armstrong poses some pertinent questions about NZ's youth literacy problems.

Director Roy Ward has assembled a stellar cast for this production and I'm sure you'll join with me in celebrating the great comic talent of Lisa Chappell, Stephen Lovatt, Greg Johnson and Nicola Kawana. My thanks to them all. And welcome to Lucy Lever and Nathan Mudge who are making their ATC debuts in this production.

Huge thanks, too, to director Roy Ward and his design team – Andrew Foster, Nic Smillie, Brad Gledhill and Theo Gibson – and big ups to our ATC Production team for manoeuvring those caravans onto the Maidment stage.

Enjoy the performance! This is one camping holiday experience that won't be ruined by rain.

Remember we have lots of other theatrical treats on offer throughout the year. Pick up an ENCOUNTER brochure or visit our website www.atc.co.nz. Why not subscribe? You save money and get to enjoy a host of extra benefits. ATC subscriptions also make great gifts.

- Colin McColl, Artistic Director



The MOTOR camp

By DAVE ARMSTRONG
BASED ON A STORY
By DANNY MULHERON

Cast

Lisa Chappell — Dr Jude Redmond | **Stephen Lovatt** — Frank Redmond

Nicola Kawana — Dawn Tairoa | **Greg Johnson** — Mike Hyslop

Lucy Lever — Holly Redmond | **Nathan Mudge** — Jared Tairoa

Creative

Director — **Roy Ward** | Playwright — **Dave Armstrong**

Set Designer — **Andrew Foster** | Costume Designer — **Nic Smillie**

Lighting Designer — **Brad Gledhill** | Assistant Lighting Designer — **Rachel Marlow**

Sound Designer — **Theo Gibson**

Production

Production Manager — **Paul Towson** | Technical Manager — **Paul Nicoll**

Senior Stage Manager — **Fern Christie** | Lighting Operator — **Rochelle Houghton**

Wardrobe Technician — **Sara Taylor** | Props Master — **Diana Kovacs**

Set Construction — **2Construct**

AUCKLAND THEATRE COMPANY WOULD LIKE TO THANK THE FOLLOWING FOR THEIR HELP WITH THIS PRODUCTION: Kees Ebskamp, Photographic image for Cyclorama – Simon Shaumann (simonshaumann.de), Tiger Turf, Benefitz, Circa Theatre.

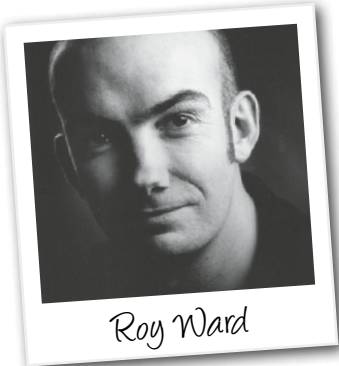
By arrangement with:



THE MOTOR CAMP was commissioned by Circa Theatre with assistance from Creative New Zealand.

THE MOTOR CAMP is the first Auckland Theatre Company production for 2012 and opened on February 11. THE MOTOR CAMP is approximately 90 minutes with an interval. Please remember to switch off all mobile phones, pagers and watch alarms.

Director's Notes



Roy Ward

It has been a joy to be back at Auckland Theatre Company working with a dream cast and production team on Dave Armstrong's vibrant comedy, THE MOTOR CAMP. Dave joined us for the first three days of rehearsals and was generous in encouraging us to make the play our own.

"Comedy is a serious business with one goal, to make people laugh" (W.C. Fields, I think), and the best comedy is grounded in the same stuff as tragedy. The bad behaviour of the characters in THE MOTOR CAMP is understandable and funny because it springs from all too recognisable fears and anxieties, and if we've done our job properly there are moments of real warmth and insight amongst the frivolity.

But I'm with Dave in thinking that only by having a ridiculous amount of fun along the way could we hope to catch the spirit of this little Kiwi ripper of a play. If enjoyment levels in the rehearsal room are any guide at all, you're in for a good night.

- Roy Ward, Director



Synopsis

Dr Jude Redmond, her uptight husband Frank and her daughter Holly go to the rather run-down Windmill Motorcamp, North of Auckland, for their annual holiday. Jude is determined to have some family time while Frank would rather be writing his book, and Holly would rather be at the Mount with her boyfriend.

On the next campsite, which is a little too close for comfort, hard case Mike, his partner Dawn and stepson Jarod are making their own fun and having their own issues.

Marshalled by the authoritarian voice of campsite owner Dutchie, the two families must come to terms with each other – and themselves – during this hilarious holiday from hell.

Erecting The Motor Camp

by *Dave Armstrong, Playwright*

To bastardise a well-known proverb, it takes a whole village to write a Dave Armstrong play. This play had its genesis a very long time ago when Danny Mulheron, a friend of mine since childhood, told me his idea for a story about two very different families sharing a site in a motor camp. I could see immediately that it was a fantastic proposition for a play.

Both Danny and I had left-wing fathers involved in education who, eschewing motels (which they couldn't afford anyway), took their families camping in tents every year, rain or shine. Pitching a tent was the closest thing to a religious ritual that these atheists had. Once the tent was pitched, out would come the left-wing book ('Pedagogy of the Oppressed'

by Paulo Friere was Dad's favourite) and the kids would be told to go away and amuse ourselves. It was brilliant parenting. Other campers were seen as an irritation, though both Danny and I had mothers who worked hard at keeping relations civil with other families, despite their grumpy husbands.

And though we couldn't forget the terrible weather, crappy facilities, neo-fascist camping ground owners and the almighty intra-family arguments that could occur, the annual camping holidays that Danny and I remembered were wonderful. I think it was this shared dramatic experience that was the real genesis of THE MOTOR CAMP. After Danny erected the first structural poles of the play, Circa Theatre commissioned a script and I ended up hammering in all the pegs and banging it out. Yet again, the ATC Literary Unit contributed in a big way. In just two days, Raymond Hawthorne, Philippa Campbell and a wonderful cast helped me make some major discoveries about my characters and write an ending to the play. A further workshop in Wellington with Danny Mulheron and wunderkind dramaturg Eli Kent enabled me to iron out some final creases in the canvas.

Though this is unashamedly a comedy, I hope you also enjoy the more serious themes of THE MOTOR CAMP. I believe camping grounds are great levellers. University lecturers read Chomsky while sitting next to builders reading Dan Brown. Middle-class women sit listening for tui and crickets, while working-class blokes drink Tui and listen to the cricket. It is this juxtaposition that attracted me to the idea of the motor camp as a sort of Pakeha marae, where issues of family, relationships, education and politics could be discussed and resolved.

Just about all Kiwis have been camping. There are wonderful rituals associated with it that tell us a lot about our national character. Yet sadly, motor camps are being sold off to provide private luxury accommodation for a few, and that's a tragedy. But now I'm sounding like Frank Redmond from the play, so I'll shut up, and hope you enjoy this love song to Kiwi camping holidays and public ownership, presented to you by a truly wonderful director, cast and crew.



Dave Armstrong



What's your holiday camping tribe?

There are a number of different types of camping personalities in New Zealand, each with their own particular style of camping.

Find out what holiday camping tribe you belong to by taking this quiz.

Q 1. Your number 1 essential camping item is:

- A – An Acaso espresso machine.
- B – Your tent, caravan, or BBQ.
- C – A 'Lonely Planet' guide.
- D – Placards.
- E – A GPS enabled Smartphone.

Q 2. The first thing you say when you find your ideal holiday spot is:

- A – It's just like a hotel!
- B – Pitch it here, halfway between the beach and the toilet block, under the macrocarpa.
- C – There aren't any signs to say we can't camp here!
- D – Who cares about bylaws.
- E – Fabulous darling!

Q 3. On tonight's menu:

- A – Diver scallop risotto/wilted rocket/wasbi and anchovy caviar with a manchego / pear / Santagata extra virgin olive oil / prelibato balsamic side salad.
- B – Catch of the day and whatever you can chuck on the barbie.
- C – Locally sourced, hand-picked, wild mushrooms on grainy bread.
- D – Burger King or kebabs.
- E – Sausages.

Q 4. Your ideal summer drink is:

- A – Elderflower liqueur, Haymans Old Tom Muddled, cucumber & mint.
- B – Beer or a nicely chilled Sauvignon.
- C – Water from a nearby fountain or natural spring water.
- D – Coke.
- E – A protein shake.

Q 5. What do you do if you find a spider in the shower?

- A – Call someone to remove it.
- B – Squash it with your bumper holiday crossword book.
- C – Enjoy the company.
- D – Recruit the spider to your movement.
- E – Swat it away with the latest issue of 'Express'.

Mostly As

You're a Glamper – you enjoy the finer things in life and take the comforts of home on holiday with you.

Mostly Bs

You're a classic Kiwi camper – you're down to earth, and love summer holidays relaxing with family and friends.

Mostly Cs

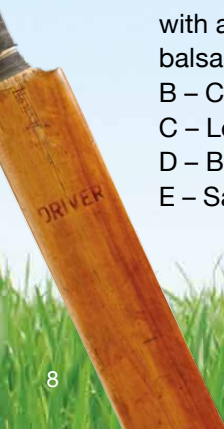
You're a freedom camper – a free-wheeling, independent camper enjoying the best of what New Zealand has to offer.

Mostly Ds

You're an occupier – standing up for the little guy.

Mostly Es

You're a K'Rd camper – Auckland's most fabulous breed of fabulousness.



The Cast



Lisa Chappell

Lisa's recent works for Auckland Theatre Company include THE IMPORTANCE OF BEING EARNEST, DESIGN FOR LIVING and THE THIRTY-NINE STEPS. She also featured as the playwright of DON'T HOLD YOUR BREATH in The Next Stage 2009 season.

Growing up in Auckland, Lisa first came to prominence as Chelsea Redfern in GLOSS. Roles in SHARK IN THE PARK, CITY LIFE and HERCULES: THE LEGENDARY JOURNEYS followed, as well as in feature films JACK BROWN, GENIUS and DESPERATE REMEDIES.

Lisa moved to Sydney and received an Advanced Diploma in Acting from The Actors Centre. Soon after, she won the role of Claire McLeod in the internationally popular television series MCLEOD'S DAUGHTERS. From many award nominations for the role, Lisa won

Most Popular New Female Talent at the 2002 Australian Logie Awards and the Silver Logie for Most Popular Actress in 2004.

After three years, Lisa left MCLEOD'S DAUGHTERS looking for a new challenge. She has since recorded and released an album, WHEN THEN IS NOW, and returned regularly to the theatre, including playing roles in EDUCATING RITA, THE HOMECOMING, MIKE & VIRGINIA and THE WIZARD OF OZ. Continuing to work on both sides of the Tasman, she starred in the Australian feature COFFIN ROCK and as a cult deprogrammer in the local series THE CULT for which she won the 2010 Qantas Award for Best Supporting Actress.

She is busy with a diverse schedule which includes emcee appearances, voiceovers, and script-writing. Lisa is a proud member of NZ Actors Equity.



Nicola Kawana

Nicola is a graduate of Toi Whakaari: New Zealand Drama School. She has just completed filming a feature working opposite Temuera Morrison in FRESH MEAT.

Nicola's television credits include lead roles in ERUPTION, THE MAN WHO LOST HIS HEAD starring opposite British actor Martin Clunes, SHORTLAND STREET, and JACKSON'S WHARF.

Theatre credits include WHO NEEDS SLEEP ANYWAY?, NGA MANURERE, WOMAN FAR WALKING, LES PARENTS TERRIBLES and BLOOD WEDDING. Nicola is a member of the NZ Actors Equity.

Stephen is a graduate of Toi Whakaari, New Zealand Drama School and worked under George Webby. He is one of our most experienced and prolific stage and screen actors also working in Australia, where he spent five years on the very popular show NEIGHBOURS.

Some of Stephen's many television credits include GO GIRLS, SPARTACUS and SHORTLAND STREET.

No stranger to stage either, Stephen has regularly trodden the boards throughout New Zealand and Australia.



Stephen Lovatt

Greg was last seen with Auckland Theatre Company in 2011's smash hit CALENDAR GIRLS. Other recent theatre credits include FOUR FLAT WHITES IN ITALY, PENALTIES, PINTS AND PIROUETTES and FLIPSIDE, all played at the glorious Centrepoint Theatre in Greg's hometown of Palmerston North.

Greg played a lead role in the 2010 feature film INSATIABLE MOON as the straight talking boarding house owner 'Bob'. He has had roles in YOGI BEAR, TRACKER, RUSSIAN SNARK and co-starred in Michael Beran's 2010 smash hit short film TEE PARTY.

His television credits include GO GIRLS, OUTRAGEOUS FORTUNE and SHORTLAND STREET. Greg is pretty sure he could fly a helicopter. He is also a member of the NZ Actors Equity.



Greg Johnson

The Creative Team



Lucy Lever

THE MOTOR CAMP is **Lucy's** debut production for Auckland Theatre Company. Based in Auckland, Lucy has trained with Outloud Theatre Company since the start of 2011. She was also a member of the 2011 National Shakespeare Schools production of THE MERCHANT OF VENICE in Wellington. Lucy has performed in shows at TAPAC Theatre, The Dorothy Winstone Theatre and in the Legislative Chamber at Parliament.

Her credits include SHIFT, MOTHER COURAGE AND HER CHILDREN and A MIDSUMMER NIGHTS DREAM.

Lucy has also had experience backstage as Assistant Director for the Year 12 Production of OUR TOWN at Western Springs College.



Nathan Mudge

THE MOTOR CAMP is **Nathan's** debut production for Auckland Theatre Company. Originally from Palmerston North, Nathan has trained with Long Cloud Youth Theatre in Wellington since 2010, and acted in productions at Wellington Performance Centre, Downstage Theatre and BATS Theatre.

His credits include VERNON GOD LITTLE, THE MISANTHROPE, DAUGHTERS OF HEAVEN, FUDDY MEERS, THE BOOK OF EVERYTHING, SHEEP, and HAMLET DIES AT THE END.

Nathan is both humbled and excited by the opportunity to work with such a talented cast and crew. He is a proud member of the NZ Actors Equity.



Roy Ward - Director

Roy is a former Associate Director / Literary Manager of Auckland Theatre Company. His previous productions for the company are David Williamson's UP FOR GRABS, THE OCEAN STAR by Michael Galvin, MY NAME IS GARY COOPER by Victor Rodger and Noel Coward's DESIGN FOR LIVING. He recently directed the Next Stage workshop of Victor Rodger's AT THE WAKE and will direct the play's premiere production later this year at Centrepont Theatre in Palmerston North.

Roy appeared as Reverend Hale in Colin McColl's acclaimed Auckland Theatre Company production of THE CRUCIBLE. His numerous acting credits include many theatre roles and appearances in SHORTLAND STREET, GO GIRLS, and OUTRAGEOUS FORTUNE.

For several years Roy was based in Amsterdam and played leading roles in a number of Dutch-produced feature films and shorts. He also works as a television writer and script editor.



Dave Armstrong - Playwright

Dave is one of New Zealand's most prolific and popular playwrights. His hit NIU SILA, co-written with Oscar Kightley, played a sold out Auckland Theatre Company season at AK05 and won a Chapman Tripp Award for Best New Play.

Auckland Theatre Company also staged his adaptation of Sia Figiel's WHERE WE ONCE BELONGED in 2008 and acclaimed comedies THE TUTOR in 2007 and LE SUD in 2010. His play RITA AND DOUGLAS, an adaptation of the letters of Rita Angus, has recently been performed in Auckland.

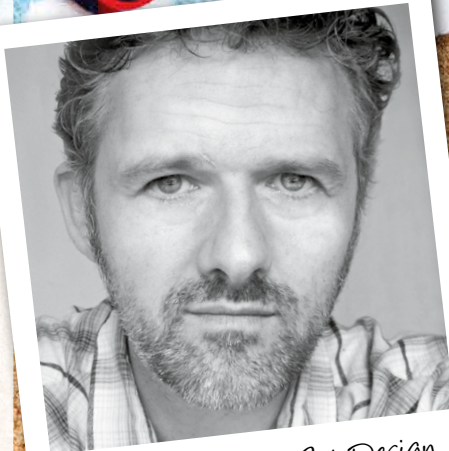
For television, Dave co-created and co-wrote the comedy series SEVEN PERIODS WITH MR GORMSBY. Dave also wrote the telemovie SPIES AND LIES, and he co-wrote BILLY, about the life of Billy T James.

Director/Designer **Andrew** was a co-founder of the award winning Wellington theatre company Trouble. He has become known for his contribution to the development of new works. Collaborations with playwrights Jo Randerson, Gary Henderson, and Duncan Sarkies have become contemporary landmarks.

Andrew was Head of Radio Drama at Radio New Zealand in 2004-05 and during this time was instrumental in bringing many of the new voices of NZ theatre to radio, including The Flight of the Conchords, Te Radar and The SEED Trilogy, which won Best Radio Drama at the 2005 NZ Radio Awards.

Recent projects include directing and designing the revival of the Jo Randerson and Trouble classic THE LEAD WAIT, and UK cult hit AN OAK TREE at Circa in Wellington. He was dramaturg for DEATH AND THE DREAMLIFE OF ELEPHANTS in its successive seasons at BATS and Downstage Theatres. Recent designs include Auckland Theatre Company's ROMEO AND JULIET and WELL HUNG.

Andrew is married to Choreographer Sarah Foster-Sproull. They have a very cool daughter called Ivy.



Andrew Foster - Set Design

Nic has a Bachelor of Design in Textiles and has worked in theatre, film and television as a costume designer for the past 13 years. Designs for Auckland Theatre Company include CALENDAR GIRLS, CABARET, AUGUST: OSAGE COUNTY, ROMEO & JULIET, THE POHUTUKAWA TREE, THE WIFE WHO SPOKE JAPANESE IN HER SLEEP, CAT ON A HOT TIN ROOF and WHERE WE ONCE BELONGED.

Nic has also costumed various Wellington based theatre projects which include SEX DRIVE, RITA AND DOUGLAS and LE SUD (Wanaka Festival of Colour), THE MOTOR CAMP, KING AND COUNTRY, TOP GIRLS, CABARET, DRACULA, PRIVATE LIVES, SWEENEY TODD and DRAWER OF KNIVES.

Winner of the Air New Zealand Screen Award for Contribution to Design for the television series THE INSIDERS GUIDE TO LOVE, Nic has also designed costumes for RAGE, TANGIWAI, FISH SKIN SUIT and AFTERSHOCK (telefeatures) and THE INSIDERS GUIDE TO HAPPINESS, SEVEN PERIODS WITH MR GORMSBY, THE HOTHOUSE and TIME TRACKERS (television series). Her operatic designs include QUARTET and THE ITALIAN GIRL IN ALGIERS. For film her works include FRESH MEAT, TURANGAWAEWAE and STICKMEN.



Nic Smillie - Costume Design

Brad designs and creates lighting and video imagery for theatre and events for the likes of Rugby World Cup, Auckland Theatre Company, Nightsong Productions, Theatre Stampede, Silo Theatre, TAPAC, Tempo and Spotlight Systems.

Auckland Theatre Company production design include THE TWITS, RED, WELL HUNG, STEPPING OUT, THE WIFE WHO SPOKE JAPANESE IN HER SLEEP, THE THIRTY-NINE STEPS, YOUNG & HUNGRY FESTIVAL 09, WHO NEEDS SLEEP ANYWAY?, THE FEMALE OF THE SPECIES, DESIGN FOR LIVING, MY NAME IS GARY COOPER, THE TUTOR, THE SHAPE OF THINGS, THE TALENTED MR RIPLEY, PLAY 2 and PLAY 2.03.

Other designs include "360" for the Wellington International Arts Festival, THE LOVER, SEXY RECESSION CABARET (TAPAC), PRIME CUTS 09 (Tempo), THE CUT (Silo), HEAD (AK07 + Wellington Season), ALADDIN (AK03), MEASURE FOR MEASURE (Unitec), MINIATURES (Malia Johnston), LASHINGS OF WHIPPED CREAM, KNOCK KNOCK TURN (Chris Jannides) and CORAM BOY (Unitec).

His works for the theatre/dance genre included creating work for UNITEC with Shona McCullough, Michael Parmenter, Michael Hurst, Leo Gene Peters, Cathy Downes, Malia Johnston, Simon Ellis, Daniel Belton, Raewyn Hill, Katie Burton and Chris Jannides.



Brad Gledhill - Lighting Design



Rehearsals





Nicola Kawana

NICOLA: "Our camping holidays were spent at Ohawe beach in South Taranaki, just outside of my hometown of Hawera. Aunties, uncles, cousins, usually a hangi, night time eeling, river and sea swimming, and hot black sand."

This summer photo reminds me of sun baking, covered in coconut oil and never getting sun burnt. Back in the days when we still had a bit of ozone layer.

I think this was taken just after the Christmas when I got a pair of diamante playboy sunglasses, a walkman and my favourite WHAM cassette – oh, the 80s..."



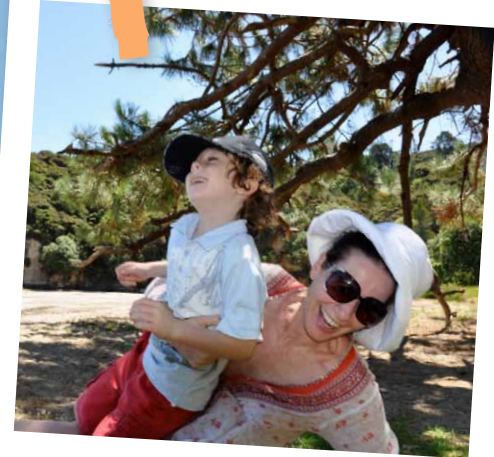
Greg Johnson

GREG: "This is me, age 4, waiting in the van to go and get the caravan we borrowed for our East Cape holiday."

There was me, my three sisters, our dog Scott, Mum and Dad in the van which was towing the caravan, the dinghy and the trailer with four bikes, three pup tents, one big tent, a big wooden radio and the card table (unfortunately Mum forgot the cards).

It was my best holiday ever."

Cast Holiday Memories



Lisa Chappell

LISA: "This was last summer with my sister Catherine, who took the photo, and my darling nephew Josh. We were at a North Shore beach not far from my house having a picnic."

Josh is an only child so I have taken it upon myself to stand in as big brother and rough house with him as much as possible. I never had a little brother so I love it. He loves it most of the time but on occasion has said - 'Aunty, stop it! You're being such a pain'.

At that point I tend to get more annoying. Such fun! We always have a good laugh together and run around like mad things, spending time with him and my sis is one of my favourite things on the planet."





Nathan Mudge

Foxton Beach

NATHAN: "There is this saying that 'a picture speaks a thousand words'. What this photo fails to say is that I did not catch this fish, nor was I even on the boat when this fish was caught. I probably ate it though.

This photo is of me at Foxton Beach Motor Camp, which my family and I went to every summer of my childhood. That is until one year I took a nap in my tent, and woke up smothered in chicken pox. We never went back.

While nowadays I'd be more inclined to holiday in a hotel room in some bustling city, the whole back-to-basics ideology that comes with camping is something I look back on with a lot of fondness - swimming at the beach, playing at the park, watching movies in the camp hall. I often wonder if I'll ever go back there, and while I imagine it won't seem as wild a time as it felt like when I was a kid, at least I'll have the memories. Good times."



Lucy Lever

LUCY: "This is a photo of me and my Dad. He used to lead our family on wonderful adventures from when I can first remember.

This was taken in the Coromandel, right before we set sail on our tiny sail boat "The Flash". I was always hard to get on board the vessel, as I used to have vivid nightmares where the boat would capsize, and be surrounded by sharks and creatures of the deep.

I can only thank Dad for giving me the hard push that I needed to overcome my fear, otherwise my fear of the water would still exist today."



A new home for Auckland Theatre Company on Auckland's waterfront

Auckland Theatre Company is fundraising to build a new theatre in Auckland's Wynyard Quarter.

The complex will redefine the theatre-going experience, offering an eclectic integration of multi-faceted, flexible performance venues with open public spaces.

What is it?

Moller Architects, in association with Sydney based architects BVN, have designed a state of the art 600 seat theatre, connected to a 200 seat studio theatre in the ASB Bank building next door, built around a courtyard that will also be suitable for outdoor performances and events.

The theatre is next to the new ASB Bank head office being built in the Wynyard Quarter and will be located on the corner of Halsey Street and Madden Street (currently the Moana Pacific Fisheries Building).

What will it be like?

It will be fantastic! Not only will it house a state of the art theatre, with comfortable seating, good leg room, excellent sight-lines and acoustics, it will also have great patron facilities: a café and bar; parking in close proximity; and great new restaurants and bars on the waterfront that are within three minutes walk of the theatre.

How will it be built?

The complex will cost approximately \$41 million, including a \$6 million contribution from ASB Bank for shared facilities. Auckland Council has just reconfirmed its support for the project with a commitment of \$10 million. Auckland Theatre Company is fundraising for the balance, with approaches being made to Central Government, private donors, businesses, charitable trusts and foundations.

If all money is raised, construction could start as early as August, with the theatre opening at the start of 2014.

Who will use it?

Not only will it be a home for Auckland Theatre Company, it will be used by many other theatre and dance companies, including the Royal New Zealand Ballet, NBR Opera New Zealand, the Auckland Festival and Black Grace Dance Company, all of whom have expressed interest in using it. The studio is also an ideal space for independent companies to develop and present work.

The new theatre complex is expected to attract in excess of 130,000 visitors per year.

Get Involved!

If you would like to become involved in the fundraising campaign or want to make a donation please call Linden Tierney at Auckland Theatre Company on 09 309 0390 ext. 272.



SUPPORTERS OF THE NEW THEATRE PROJECT



AUCKLAND THEATRE COMPANY
AND PIPA PRESENT

Sinarella

From the team that brought you
POLYHOOD IN MUMULAND!

Directed by: **Goretti Chadwick
and Anapela Polataivao**

Written by: **Goretti Chadwick
and Sean Coyle**

See it at: **Mangere Arts Centre
- Ngā Tohu o Uenuku**

10 – 14 April

"The vastiest (craziest, funniest,
dorkiest) wannabe love story
ever. Sorta like Cinderella, but a
whole lot fresher man!"

"A blast of high-energy theatrical
vitality."

— NZ Herald

With live music, brilliant
dancers and funny
characters, **Sinarella** is
a high octane musical
extravaganza to entertain
the kids during the April
school holidays.



Introducing Amo

Amo Ieriko is the Participation Coordinator for Auckland Theatre Company. He has a background in the Pacific arts community initiating and coordinating events for a diverse range of audiences. He is also an accomplished Polynesian dancer and one of the principal dancers for Tahiti Tourism, Pasifika Festival and Ta'alolo Night. Amo's belief that the Arts serve to transform our experience drives him to reach out creatively to community groups.



Amo Ieriko

Amo has been with Auckland Theatre Company for an action-packed ten months, helping to develop ATC Participate by getting stuck in to a range of exciting projects.

How would you describe your role at ATC?

"I connect the community and the company."

ATC Participate is all about people working creatively together...what has been your creative highlight so far?

"THE WASTE LAND project. Working alongside 33 senior citizens with so much to enthusiasm and experience to offer and seeing how they came together as a group with the guidance of Michael (Hurst) and John (Gibson) was amazing. The final performance was beautiful. I learnt so much from the people who took part and also discovered that artists aren't untouchable.

I also enjoyed working on the Hope project with new migrant children, getting to know lots of people in the local neighbourhood and making things happen."

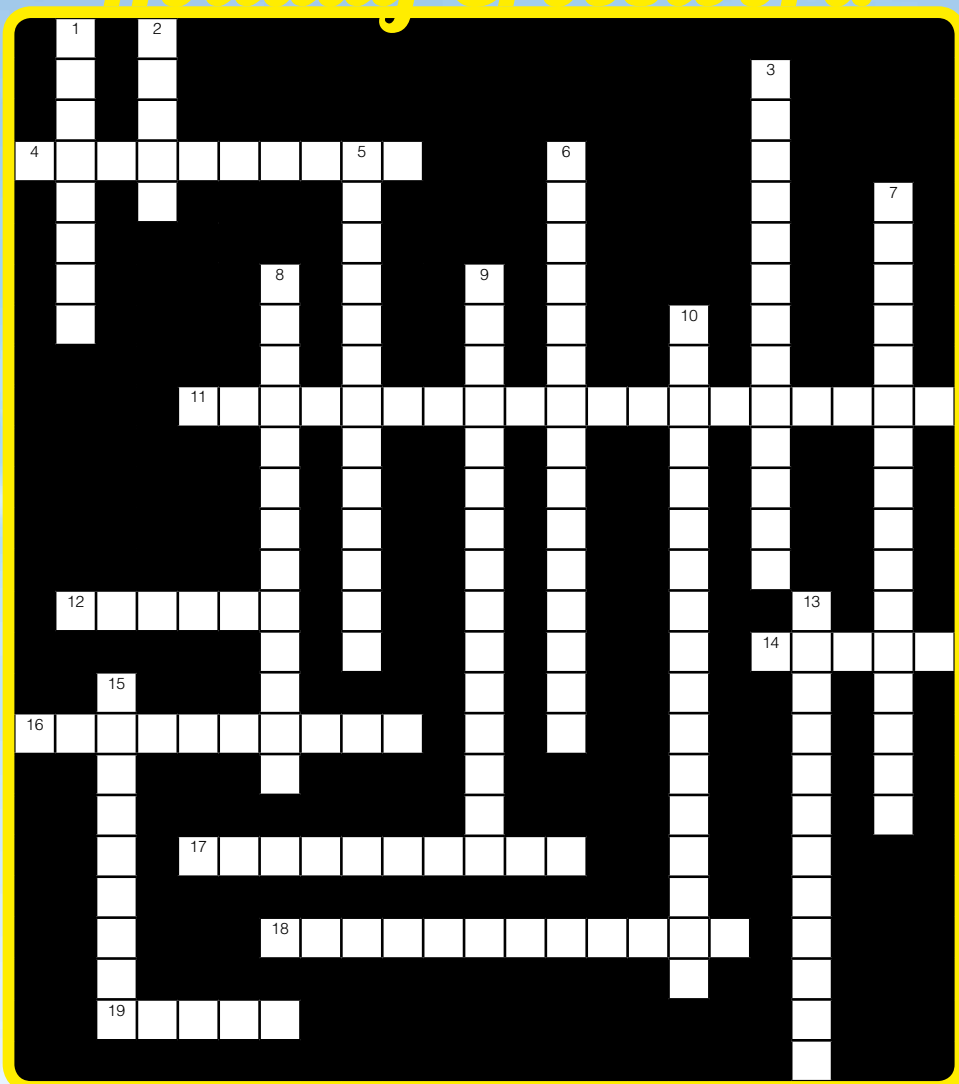
What's coming up for ATC Participate?

"A busy year! An expanded workshop programme for the community and the industry, two shows in collaboration with PIPA at the Mangere Arts Centre and another community show before Christmas."

Sounds like you'll need a holiday after that! What's your favourite holiday?

"Lying on a beach – any beach – and sleeping in the sun."

Holiday Crossword



ACROSS

- 4 Which city is Dave Armstrong from?
- 11 Who starred in both LE SUD and directed A CHRISTMAS CAROL?
- 12 Which language did the champagne socialists speak in LE SUD?
- 14 What subject did the teacher in THE TUTOR teach?
- 16 Stephen Lovatt starred as Max in what Aussie TV show?
- 17 Who played Ebenezer Scrooge in ATC's 2004 production of A CHRISTMAS CAROL?
- 18 Who is the 2012 ATC season brochure cover star?
- 19 Which play featured a politician from the Federation Of United Consumers And Taxpayers?

DOWN

- 1 Which TWIT has been in a play by Dave Armstrong produced by ATC in the past?
- 2 What telemovie about an iconic New Zealander did Dave Armstrong co-write?
- 3 Which member of the British Royal family attended the opening night of NUI SILA where he was convinced to do a small voiceover in BRO'TOWN?
- 5 Who co-wrote NIU SILA with Dave Armstrong?
- 6 Director Roy Ward writes for which iconic Kiwi TV show?
- 7 Who was director of both the mainbill and Next Stage productions of LE SUD?
- 8 THE MOTOR CAMP is based on a story by?
- 9 What was the first Dave Armstrong play produced by ATC?
- 10 What hit Aussie TV show did Lisa Chappell win awards for?
- 13 In THE TUTOR the property developer lived on which famous Auckland drive with spectacular views overlooking Rangitoto Island?
- 15 Dave Armstrong's adaptation of WHERE WE ONCE BELONGED was based on a novel by?

AUCKLAND THEATRE COMPANY

IN THE NEXT ROOM (OR THE VIBRATOR PLAY)

By Sarah Ruhl

MAIDMENT THEATRE, 15 March – 7 April

His Chattanooga Vibrator, a modern device for treating hysteria, has many advocates – not least the female patients, who come back wanting more. Meanwhile, his wife Catherine, lonely and struggling with new motherhood, seeks the companionship of her husband's patients and aches to discover just what goes on in the next room.

Intelligent, stylish and droll, IN THE NEXT ROOM (OR THE VIBRATOR PLAY) is a glittering comedy of manners about knowing what is good for you, even if there are no acceptable words for it.



SILO THEATRE Auckland

TOP GIRLS

By Caryl Churchill
Q, 305 Queen St, 23 February – 17 March



1980s London. Shoulder pads, power dressing and Maggie Thatcher. This is The Corporation of Me. High-flying Marlene has eviscerated the glass ceiling. She's finally landed the top job and is taking the girls out to celebrate.

What's On In Theatres Around The Country?

CENTREPOINT THEATRE

MICHAEL JAMES MANAIA

By John Broughton,
in association with Taki Rua
10-17 March



MICHAEL JAMES MANAIA is a poignant story about a New Zealand man who, after returning from the Vietnam War, finds himself at odds with his culture, his history and his memories. Packed full of dynamic theatrical action and colourful characters, we follow his journey through childhood, family, love, grief, violence, conflict and passion.

COURT THEATRE Christchurch

SIDE BY SIDE BY SONDHEIM

Music and Lyrics by
Stephen Sondheim
11 Feb - 3 March



Join in the celebration of Sondheim in this musical revue that romps through some of the greatest Broadway numbers of all time.

Enjoy A LITTLE NIGHT MUSIC with some FOLLIES and a WEST SIDE STORY thrown in for good measure. Filled with songs that ANYONE CAN WHISTLE, you'll be in good COMPANY - even if A FUNNY THING HAPPENED ON THE WAY TO THE FORUM.

AUCKLAND

WELLINGTON

PALMERSTON NORTH

CHRISTCHURCH

CIRCA THEATRE Wellington

MEETING KARPOVSKY

By Helen Moulder, Sue Rider and Jon Trimmer
10 February – 25 February

Sylvia used to travel the world and its famous ballet theatres. Now she spends time alone in her wisteria covered attic filled with her daughter's unwanted possessions and photographs of her favourite ballet dancer, Alexander Karpovsky - she has seen him dance 127 times. One day the silent Karpovsky mysteriously appears and begins to teach the stumbling Sylvia to dance...and to live.

DOWNSTAGE THEATRE Wellington

FREQUENTLY ASKED QUESTIONS - TO BE OR NOT TO BE, ETC.

2 – 11 March



In FREQUENTLY ASKED QUESTIONS an insomniac called Hamlet discovers a script documenting the end of his life, and begins some serious late-night soul-searching. 'What a piece of work is a man?' 'To be, or not to be?' These are his FAQs. And Hamlet can't sleep until he knows.

Writers Natalie Medlock and Dan Musgrove have been working in collaboration with Michael Hurst since early 2010 to develop this semi-autobiographical work. With 'cameos' from some of the Bard's greatest characters and a climax where Hurst unleashes 30 years of stage combat experience on himself, Frequently Asked Questions is Shakespeare as you've never seen it.

BATS THEATRE Wellington

RICHARD MEROS SALUTES THE SOUTHERN MAN

Adapted from the book by Richard Meros by
Geoff Pinfield and Arthur Meek
8 – 17 March



He tried to save New Zealand by becoming Helen Clark's young lover... He failed. Now, the Chapman-Tripp® award-winning Richard Meros is back, with a new nuclear-PowerPoint® to prove. The number-8 wire nation faces extinction, our pioneer culture eclipsed by the globalised Fonterra® farmer with a Facebook® account. Meros alone holds the key to our salvation – the craggy New Zealand hardness that still glimmers within the most urbane of latte-drinkers. The spirit of The Southern Man.

To find out what else is going on in Auckland be sure to read the latest copy of

Metro
Magazine

PRODUCTION SUPPLIERS:

PHILIPS Selecon

Philips Selecon leads in the design, development and manufacture of world-class and distinctive entertainment and specialised display lighting.
www.seleconlight.com



TigerTurf is a worldwide manufacturer of synthetic grass and synthetic turf for sport fields, recreation and landscaping.
www.tigerturf.co.nz



Oceania is your premium sound, lighting, staging and screen partner in New Zealand for any sized event.
www.oceania-audio.co.nz



2 Construct's specialist team of carpenters, scenic artists, metalworkers and designers can meet the set building requirements and budget of every client; from design services and construction to delivery and installation.
www.2construct.co.nz



Benefitz provide print and related solutions for advertising. They produce everything from business cards through to billboard skins, and have over 21 years experience.
www.benefitz.co.nz

BEAUTY AND PRODUCT SPONSORS:



M.A.C. Cosmetics offer a large selection of makeup, skin care products and nail care items. Visit Smith & Caughey's, St Lukes, Britomart or Botany Downs.

AUCKLAND THEATRE COMPANY

ARTISTIC DIRECTOR – **Colin McColl**
GENERAL MANAGER – **Lester McGrath**
CREATIVE DEVELOPMENT & EDUCATION MANAGER – **Lynne Cardy**
LITERARY MANAGER – **Philippa Campbell**
DRAMATURG – **Anders Falstie-Jensen**
YOUTH ARTS CO-ORDINATOR – **Whetu Silver**
PARTICIPATION CO-ORDINATOR – **Amo Ieriko**
PRODUCTION MANAGER – **Paul Towson**
SENIOR STAGE MANAGER – **Fern Christie**
TECHNICAL MANAGER – **Paul Nicoll**
MARKETING & COMMUNICATIONS MANAGER – **Michael Adams**
TICKETING & SALES MANAGER – **Anna Nuria Francino**
MARKETING ASSISTANT – **Laura Jones**
TICKETING & SALES REP – **Sophie Nichols**
GRAPHIC DESIGNER – **Claire Flynn**
DEVELOPMENT MANAGER – **Linden Tierney**
DEVELOPMENT ADMINISTRATOR – **Sarah Nutbrown**
BUSINESS MANAGER – **Kathy Russell**
FINANCE OFFICER – **Kerry Tomlin**
RECEPTIONIST – **Sue East**



AUCKLAND THEATRE COMPANY BOARD OF DIRECTORS

Gordon Moller ONZM (Chair), Anne Hinton QC, Dayle Mace MNZM, Karen Fistonich, Ross Green, Scott Kerse, Patricia Watson.

ATC PATRONS

Margaret Anderson
John Barnett
Betsy and Michael Benjamin
Mark and Louise Binns
Adrian Burr and Peter Tatham
John and Stephanie Clark
Erika and Robin Congreve
Paul and Barbie Cook
Trevor and Jan Farmer
Antonia Fisher and Stuart Grieve
Stephen and Virginia Fisher
Cameron Fleming
Michael Friedlander
Dame Jenny Gibbs
Michael and Stephanie Gowan
Ross and Josephine Green
John and Sue Haigh
Rod and Penelope Hansen
Anne and Peter Hinton
Michael and Dame Rosie Horton
Peter and Sally Jackson

Len and Heather Jury
Ross and Paulette Laidlaw
Dayle and Chris Mace
Andrew MacIntosh and Hillary Liddell
Peter Macky and Michael Best
Laurie Matthews and Koen Boons
Jackie and Phillip Mills
Denver and Prue Olde
Maria Renhart
Fran and Geoff Ricketts
Mike Smith and Dale d'Rose
Philippa Smith-Lambert and Chris Lambert
Mike and Tiare Robinson
Lady Tait
Russell and Julie Tills
Kit Toogood and Pip Muir
Simon Vannini and Anita Killeen
Sir James Wallace
Evan and Katie Williams

ATC 2011 SUPPORTING ACTS

Our Standing Ovation Supporters
Sandy and Alan Bulmer

Our Curtain Call Supporters
Rob Nicoll
Ted and Wendy Van Arkel

Our Take A Bow Supporters
Shane Compton
Anna Connell
Sandra Greenfield
Rosemary Langham
Phillipa Meadowcroft
Ewan and Jenny Price
Joanne Smout
Brian and Pam Stevenson

For more information about how you can support Auckland Theatre Company visit www.atc.co.nz/Partnerships or call Linden Tierney 09 309 0390 ext. 272

SUBSCRIBE AND SAVE!



09 Feb - 03 March
Maidment Theatre



15 March - 07 April
Maidment Theatre



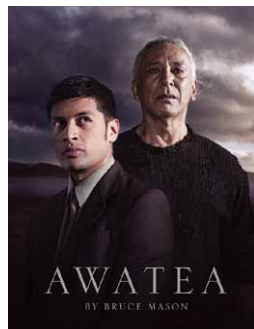
03 May - 26 May
Maidment Theatre



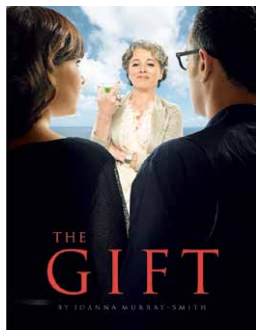
07 June - 07 July
Skycity Theatre



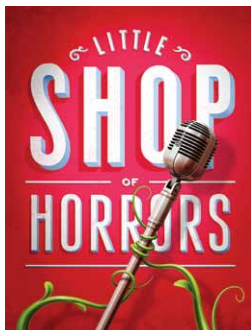
28 June - 22 July
Herald Theatre



19 July - 11 August
Maidment Theatre



13 September - 06 October
Maidment Theatre



01 November - 25 November
Q, 305 Queen Street

Call 09 309 0390 for your FREE 2012 ATC Subscription Brochure

AUCKLAND
THEATRE
COMPANY