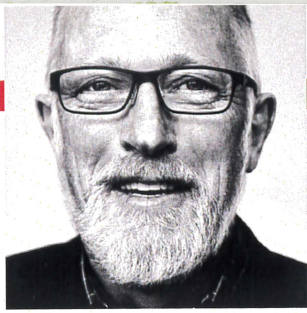


ON— STAGE

AUCKLAND
THEATRE
COMPANY

Vol. 1 No. 3
Apr 2015





WELCOME NOTES

Colin McColl

Kia ora koutou katoa, Talofa lava, Malo e lelei, Fakaalofa lahi atu, Bula Vinaka, Kia orana, Malo ni.

Welcome back to MUMULAND. We've had some great Mumuland adventures at Ngā Tohu o Uenuku (Mangere Arts Centre) in the last couple of years. This time Hans and Gertie go on a journey through Mumuland to save their Dad from the breadline in this wonderful Pasifika version of Hansel and Gretel, originally conceived by Lauren Jackson and Lolo Fonua.

Our fantastic creative team – directors Alison Quigan and Troy Tu'ua, musical directors Nastassia Wolfgramm and Sefa Taouma and designers Rachel Walker, Sarah Burren and Andrew Potvin have concocted a delicious theatrical treat featuring talking pigs, magical fairies and an eccentric lolly witch.

Those of you who've been to Mumuland before will be pleased to know the ever hilarious Aunty Sila is back too – as always, hatching a new business plan and ready to save our heroes in the nick of time. Malo lava and huge thanks to the Mangere community and to everyone involved in bringing this glorious family entertainment to the stage.

Sit back and enjoy the sweet trip through Mumuland.

DIRECTOR'S NOTES

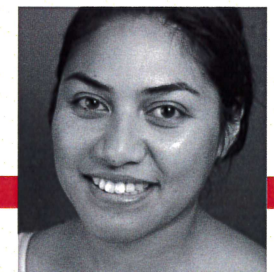
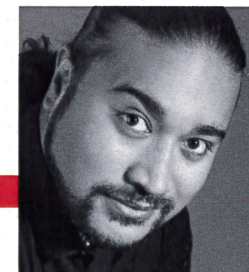
Alison Quigan, Troy Tu'ua & Nastassia Wolfgramm

Magic! It's the magic in the rehearsal room that has made us smile, made us giggle and made us laugh out loud. It's the magic in the music that has made us stop in our tracks and the magic of our heroes on a journey, making a story that warms our hearts and makes the hard work so rewarding.

The Lolly Witch of Mumuland has been ten weeks of rehearsing in weekends and evenings to bring all the elements together. Ten weeks of dancing and singing until we dropped. Watching performers grow in strength and confidence in that time has been magic for us.

The cast ranges in ages from ten years upwards with some actors being brand new to performance and others with more than twenty years' experience. It has been a brilliant opportunity to share experience and expertise within the group and has required a major commitment from the thirty strong cast. It has also put a lot of pressure on their families, jobs, church, school work, sports days and Polyfest. Our thanks to our amazing cast and musicians, and to the families who have supported them.

We had a great time last year with Polly Hood and this year we hope you all enjoy the magic of Mumuland again. If you are new to Mumuland – then welcome – it's great to see you.



THE LOLLY WITCH OF MUMULAND

Originally conceived by LAUREN JACKSON AND LOLO FONUA

CAST

KATE-LOUISE ELLIOTT – Lolly Witch | FAAMANU VAUELI – Hans
LAVINIA UHILA – Gertie | SAMSON CHAN-BOON – Dad
UNALOTO FUNAKI – Auntie Sila | TAVAI FAASAVALU – Poaka
LUSE SU'A – Prudence | AARON RYAN – Popo
IDALENE ATI, JILL KARAPANI, VALARIE PERESE,
CARMEL MARIA, ZANDRA AH JAY-MAEPU – Female Chorus
JAKE AVONA, LOLESIO KATA, TIM MITIPELO, EPIPHANY (FANE) TOALIMA,
GERARD NAEA, VILLA JUNIOR LEMANU, KJ ANETONE – Male Chorus
ADYHANA URIKA FILIFIA, ARIETA FARANI, ELLA MAVAEGA,
EMILY ROSE SUANIU-SOFAI, JOSEPHINE MAVAEGA, LILEEKATRE IERIKO,
SIANA VAGANA, TORIE PICKERING – Fairy / Teen

CREATIVE

Direction – ALISON QUIGAN & TROY TU'UA
Musical Direction – NASTASSIA WOLFGRAM
Assistant Musical Direction – SEFA TAOUMA
Set Design – RACHAEL WALKER
Costume Design – SARAH BUREN
Lighting Design – ANDREW POTVIN

MUSICIANS

Guitarist – SEFA TAOUMA | Bass Guitarist – POS MAVAEGA
Drums, Percussion, Vocals – ITALIA HUNT | DJ Flip the Script – MARK DE JONG
Drums – BOB SAVEA

PRODUCTION

Production Manager – ANDREW MALMO
Company Manager – ELAINE WALSH
Stage Manager – NATASHA LAY
Project Co-ordinator – TANYA MUAGUTUTI'A
Technical Operator – JOHN LEPPER
Sound Operator – MARK DE JONG
Set Construction – 2CONSTRUCT
Scenic Artists - Floor – CHRISTINE URQUHART
Scenic Artist - Props/Lolly House – NATASHA PEARL

By arrangement with

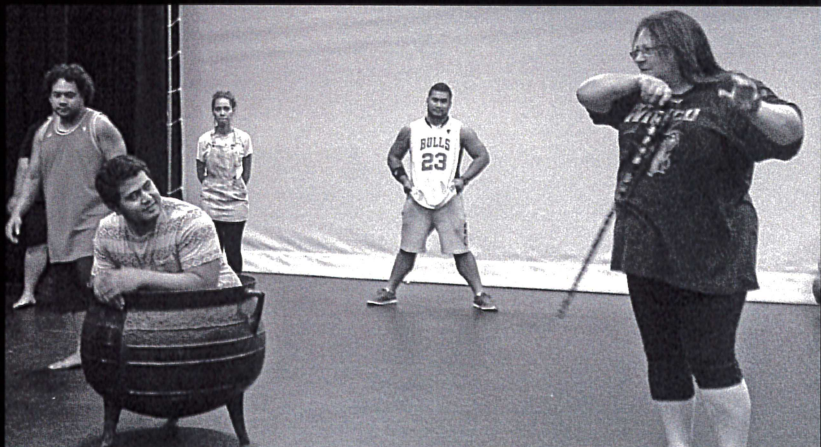


Auckland Theatre Company thanks the following people and organisations for their help with this production:

Light Fx Ltd, Charmaine Power, Tama Waipara, Bren Grew and Blast Entertainment, Nicola Owen, Kevin Keys, Raven-Leigh, Faifua-Young, Ahrin Swift-Mayor, Virginia Frankovich, Talia-Rae Mavaega, George Kahi, Bruce Graham, Tavai Karapani, Uaina Ieriko, Emi Suaniu - Sofai, Aaron and Sarah Pickering, Lila Vagana, Anna Bennington, ATC Volunteers, ATC Ambassadors, and all of the families of our cast and crew - thanks for your support.

THE LOLLY WITCH OF MUMULAND opened on 11 April 2015 at Mangere Arts Centre - Ngā Tohu o Uenuku, and is approximately 60 minutes with no interval. Please remember to switch off all mobile phones, pagers and watch alarms.





ABOUT ATC PARTICIPATE

ATC Participate is Auckland Theatre Company's innovative community programme providing opportunities for people from all over the super city to get creative, get involved and share their love of performing.

Our exciting *Neighbourhood Theatre* project works with local communities and guest artists to celebrate Auckland's diverse neighbourhoods through pop-up performances, large and small-scale community events and theatre in all sorts of surprising places.

If you'd like your neighbourhood to get involved contact Tanya Muagututi'a:
tanya@atc.co.nz

If you're an artist interested in working with *ATC Participate* contact Lynne Cardy: lynne@atc.co.nz

**Come in, take part,
create and share.**



THANKS TO OUR SUPPORTERS

PRINCIPAL
FUNDRERS



CORE
FUNDER



ASB Community Trust
Te Kaitiaki Putea o Tamaki o Tai Tokerau

PRODUCTION
PARTNERS



PRODUCTION
SUPPLIERS

ACCESS SCAFFOLDING
2CONSTRUCT
XYTECH LIGHTING
FIRST SCENE

